

Anti-STEAP1 hIgG1 Reference Antibody (Vandbio)

Product Information

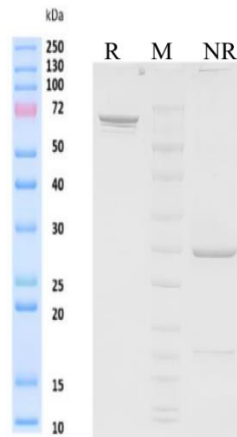
Product Name	Anti-STEAP1 hIgG1 Reference Antibody (Vandbio)
Storage temp.	Store at 2-8°C short term (1-2 weeks).Store at $\leq -20^{\circ}\text{C}$ long term. Avoid repeated freeze-thaw.
Catalog# / Size	GM-87355MAB-1mg / 1 mg GM-87355MAB-5mg / 5 mg GM-87355MAB-25mg / 25 mg GM-87355MAB-50mg / 50 mg GM-87355MAB-100mg / 100 mg

Antibody Information

Expression System	CHO
Aggregation	< 5% as determined by SEC-HPLC
Purity	> 95% as determined by SDS-PAGE
Endotoxin	< 1 EU/mg, determined by LAL gel clotting assay
Sterility	0.2 μm Filtered
Target	STEAP1
Clone	Vandortuzumab
Alternative Names	PRSS24, STEAP
Source/Isotype	Human IgG1 (KEEM), Kappa
Application	/
Description	The STEAP1 (Six-Transmembrane Epithelial Antigen of Prostate 1) gene is a gene that is highly expressed in prostate tissue and belongs to a family of six-transmembrane proteins. The main functions of STEAP1 are associated with the transport across the cell membrane, signal transduction, and interactions between cells.
Formulation	phosphate-buffered solution, pH 7.4.

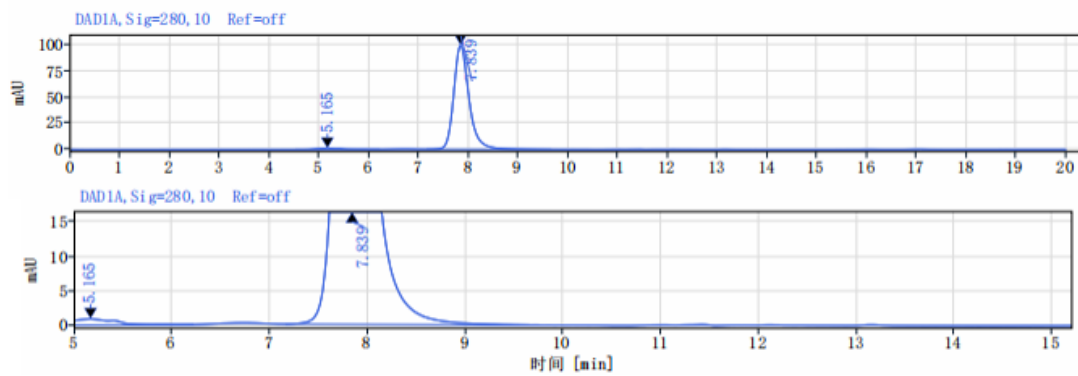
Data Examples

SDS-PAGE



On SDS-PAGE under reducing (R)/non-reducing(N-R) condition. The gel was stained overnight with Coomassie Blue. The purity of the protein is greater than 95%.

SEC-HPLC



The purity of this product is more than 95% verified by SEC-HPLC